

NEWS RELEASE

February 15, 2022

FOR IMMEDIATE RELEASE

Contact: Myra Stoney, Health Director, director@swhealth.ne.gov, 308-345-4223

COVID-19 Update for Southwest Nebraska

- 72 cases of COVID-19 were recorded in Southwest Nebraska Public Health Department (SWNPHD) between January 31 - February 6, 2022. Less than 6% of all tests were positive in the last week, as compared to 15.2% in the previous month. The total number of COVID tests conducted last week is comparable to the 4- week average (1286 v/s 1440)
- Case rates continue to fall, representing the third straight week of a steep drop in new COVID cases as well as test positivity rates.
- Vaccination rates have dropped considerably, especially when seen by age cohorts. The proportion of under 65-year-olds who are fully or even partially vaccinated is far lower than the proportion of over 65-year-olds who have been vaccinated.

Weekly report Feb 7 – Feb 13, 2022

Overview

The weekly report will look at COVID-19 cases in SWNPHD across different time periods, presenting graphs showing daily progress of cases and a weekly summary in conclusion

- The first table describes total COVID positive cases detected from **Feb 7 – Feb 13** (1 week) and **Jan 17 – Feb 13** (4 weeks) in Chase, Dundy, Hayes, Hitchcock, Frontier, Furnas, Keith, Perkins and Red Willow counties. Positive results are described as weekly and monthly **COVID cases/10,000 population**.
- The second table describes all COVID tests conducted in SWNPHD from **Feb 7 – Feb 13** (1 week) and **Jan 17 – Feb 13** (4 weeks). We describe **total tests, positive cases and test positivity rate** by age and gender.
- The third table shows the **proportion of persons fully vaccinated** in SWNPHD. We define “fully vaccinated” as the proportion of persons who have received the minimum recommended dose (2 for Pfizer & Moderna; 1 for Janssen vaccines). Data is described by **county and age** category. Data current as of **Feb 13, 2022**.
- The first graph looks at the weekly progress of the pandemic from **April 1, 2020 – Feb 13, 2022** across all 9 counties in SWNPHD. We describe the **daily COVID positive case rate (7-day rolling average¹)** across SWNPHD.
- The second graph describes the **average daily case rate (7-day rolling) by age**, dividing the population by **10-year age categories**.
- The third graph describes the weekly number of persons who received their **first dose of COVID vaccine** in each of the 9 counties in SWNPHD, further describing **weekly vaccine recipients by age**.

¹ 7-day rolling average refers to the sum of the cases reported on that day and the preceding 6 days divided by 7. This number is presented for each day to ‘smooth out’ the line for cases.

The table below describes COVID positives/10,000 population and the positivity rate for the **past week (Feb 7 – Feb 13, 2022) & the past 4 weeks (Jan 17 – Feb 13, 2022)**

	Total Population	Feb 7 – Feb 13 (1 week)		Jan 17 – Feb 13 (4 weeks).	
		Positive cases/10,000 population	Test Positivity rate	Positive cases/10,000 population	Test Positivity rate
Chase	3,734	10.7	5.3%	141.9	9.5%
Dundy	2,023	4.9	0.6%	163.1	5.2%
Frontier	2,609	23.0	12.5%	191.6	19.9%
Furnas	4,786	18.8	7.8%	384.5	28.8%
Hayes	943	10.6	8.3%	84.8	16.7%
Hitchcock	2,843	21.1	3.1%	179.4	9.6%
Keith	8,099	23.5	7.8%	282.8	18.7%
Perkins	2,907	13.8	7.4%	244.2	15.7%
Red Willow	10,806	20.4	5.6%	179.5	13.7%
TOTAL	38,750	18.6	5.6%	225.3	15.2%

The table below describes COVID tests conducted, positives and the positivity rate by age and gender for the **past week (Feb 7 – Feb 13, 2022) & the past 4 weeks (Jan 17 – Feb 13, 2022)**

Age (in yrs)	Feb 7 – Feb 13 (1 week)			Jan 17 – Feb 13 (4 weeks).		
	Total Population	Positive cases	Test Positivity rate	Total Population	Positive cases	Test Positivity rate
0-17	89	5	5.6%	426	114	26.8%
18-29	170	10	5.9%	820	133	16.2%
30-39	131	5	3.8%	628	137	21.8%
40-49	166	8	4.8%	699	110	15.7%
50-59	200	16	8.0%	839	125	14.9%
60-69	150	6	4.0%	718	117	16.3%
70-79	123	12	9.8%	527	81	15.4%
80-89	257	10	3.9%	1,104	56	5.1%
Total	1286	72	5.6%	5,761	873	15.2%
Gender						
Female	950	41	4.3%	4,105	493	12.0%
Male	336	31	9.2%	1,645	371	22.6%
Data missing/ not disclosed	0	0	0.0%	11	9	81.8%
Total	1286	72	5.6%	5,761	873	15.2%

Details of vaccination rates by age in each of the nine counties in Southwest Nebraska Public Health Department is shown below. The legend for color codes used is also displayed. Percentages have been rounded off to the nearest whole number. Vaccines are currently available to all eligible residents aged 5 years and over. Only 1st (Janssen) & 2nd (Moderna & Johnson & Johnson) doses (Moderna & Johnson & Johnson) have been considered, booster doses have not been counted to calculate “completely vaccinated” rate. Date spans the period from **15 Dec 2020 – 13 Feb 2022**.

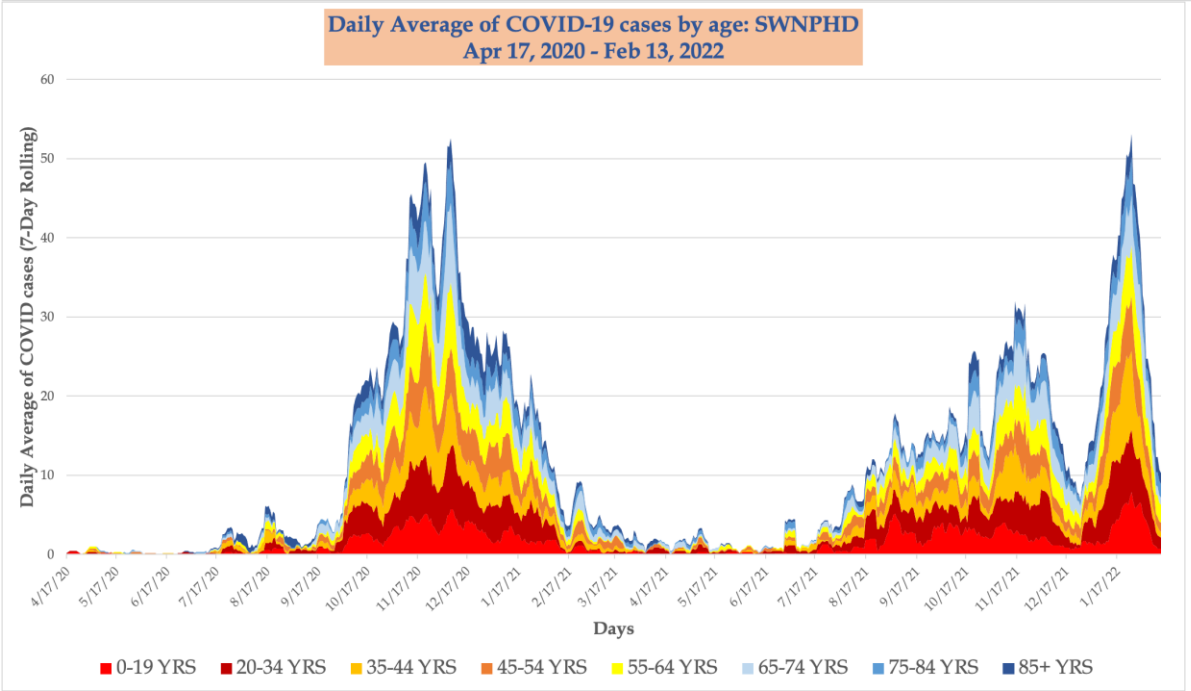
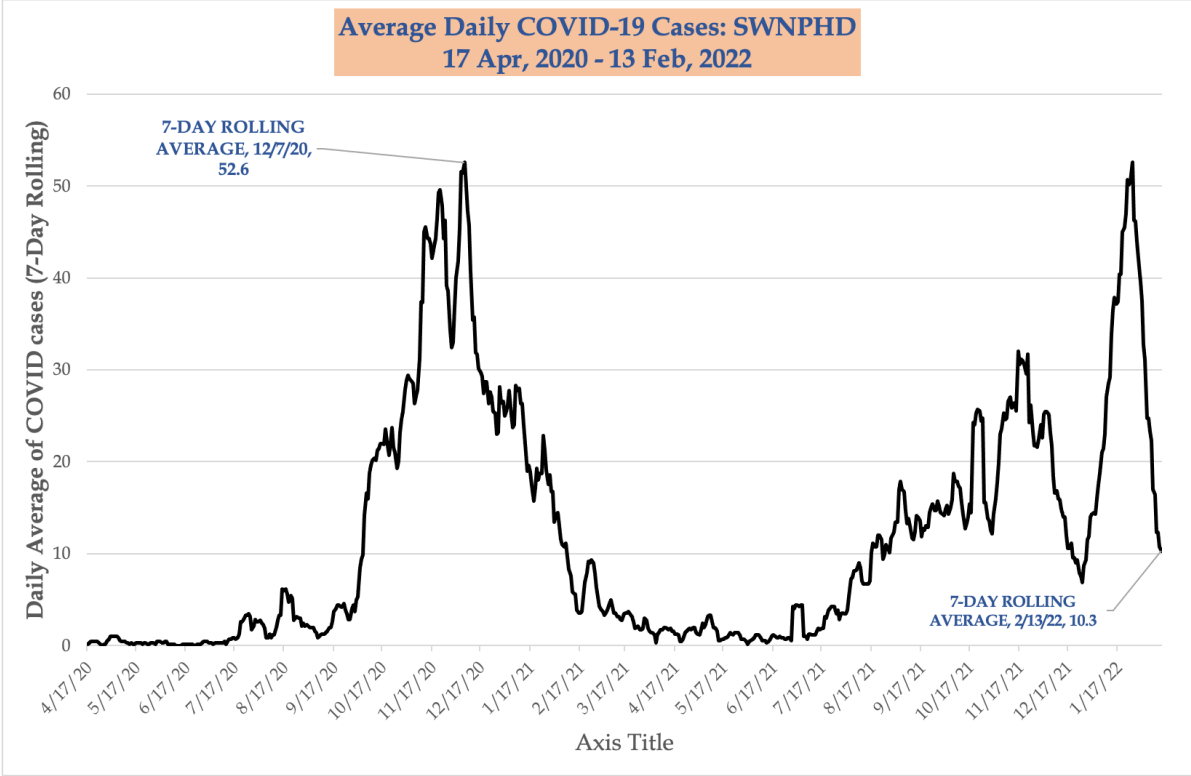
	0-19 YRS	20-34 YRS	35-44 YRS	45-54 YRS	55-64 YRS	65-74 YRS	75-84 YRS	85+ YRS	ALL AGES
Chase	11%	34%	38%	46%	49%	83%	74%	65%	42%
Dundy	7%	21%	22%	32%	41%	65%	100%	42%	30%
Frontier	6%	30%	36%	42%	50%	62%	54%	100%	37%
Furnas	15%	40%	47%	49%	60%	82%	92%	78%	49%
Hayes	8%	23%	31%	20%	30%	74%	48%	50%	28%
Hitchcock	6%	22%	33%	33%	46%	77%	51%	64%	35%
Keith	13%	36%	44%	43%	60%	64%	66%	85%	45%
Perkins	10%	30%	39%	44%	52%	72%	81%	56%	40%
Red Willow	10%	33%	45%	43%	58%	93%	68%	87%	43%
SWNPHD	11%	33%	41%	42%	54%	76%	69%	75%	42%

0% - 24%	Less than 1/4th received 1 or 2 dose as recommended
25% - 49%	1/4ths to 1/2 received 1 or 2 dose as recommended
50%- 74%	1/2 to 3/4ths received 1 or 2 dose as recommended
75% & higher	Over 3/4ths received 1 or 2 dose as recommended

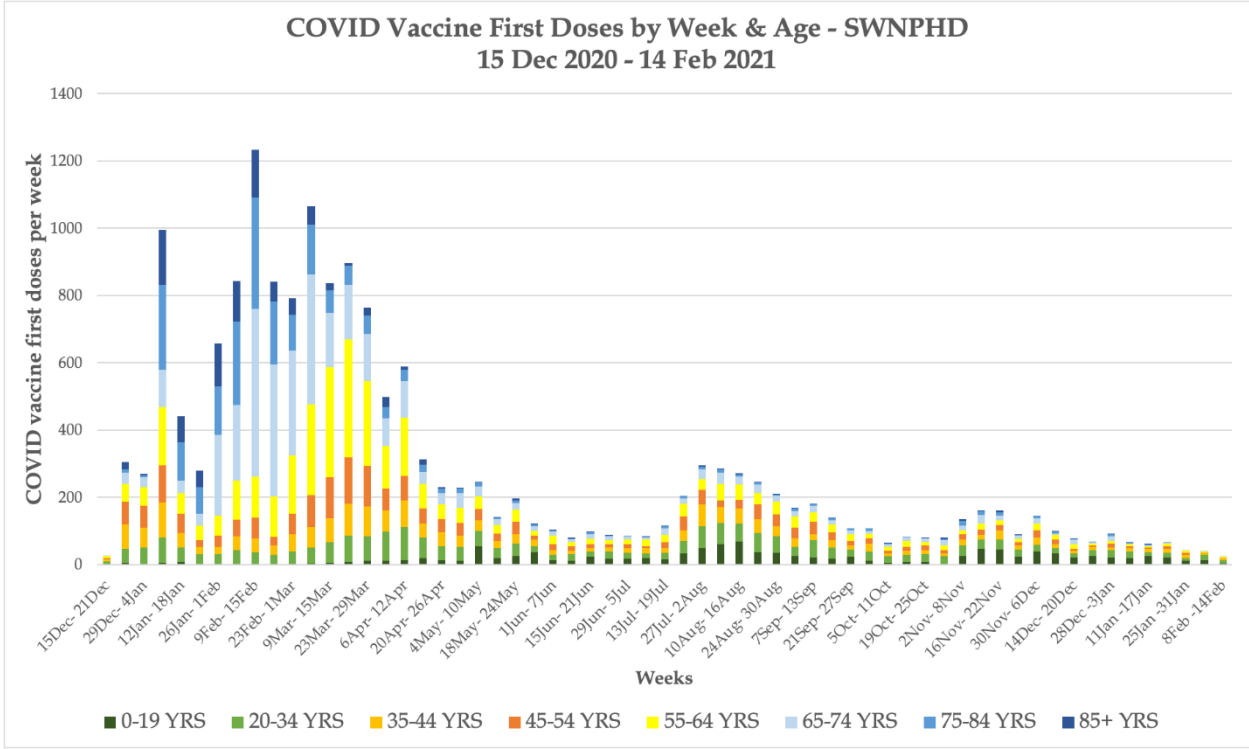
The first graph below describes the **average daily number of new cases** across all 9 counties of Southwest Nebraska Public Health Department from 5 May 2020 – 13 February 2022. Daily average is depicted by the 7-day rolling average of cases.

The second graph describes the daily average of cases by age. The width of the graph represents the average number of new COVID cases for the previous 7-days, and the individual colors describe the ages.

In general, blue = 65+ years, Yellow & Orange = 35-64 years old, Red = Less than 35 years old.



- The graph below describes the **weekly number of COVID vaccination first doses accessed by residents in SWNPHD (Chase, Dundy, Frontier, Furnas, Hayes, Hitchcock, Keith, Perkins and Red Willow counties)** from 15 Dec 2020 – 14 February 2022.
- The height of the bar graph corresponds to the number of first doses of vaccine given to residents and the colors represent different age groups. The height of each colored band corresponds to the persons in that age group receiving their first dose of COVID vaccine that week.
- In general, Blue = 65+years, Yellow/Orange = 35-64 years, & Green = below 35 years



SWNPHD is located at 404 West 10th St (1 block north of Arby’s) in McCook and can be reached by calling 308-345-4223. The website www.swhealth.ne.gov contains many resources and additional information helpful to prevent disease, promote and protect health. You can also follow SWNPHD on Facebook and Instagram. SWNPHD serves Chase, Dundy, Frontier, Furnas, Hayes, Hitchcock, Keith, Perkins, and Red Willow counties.

###